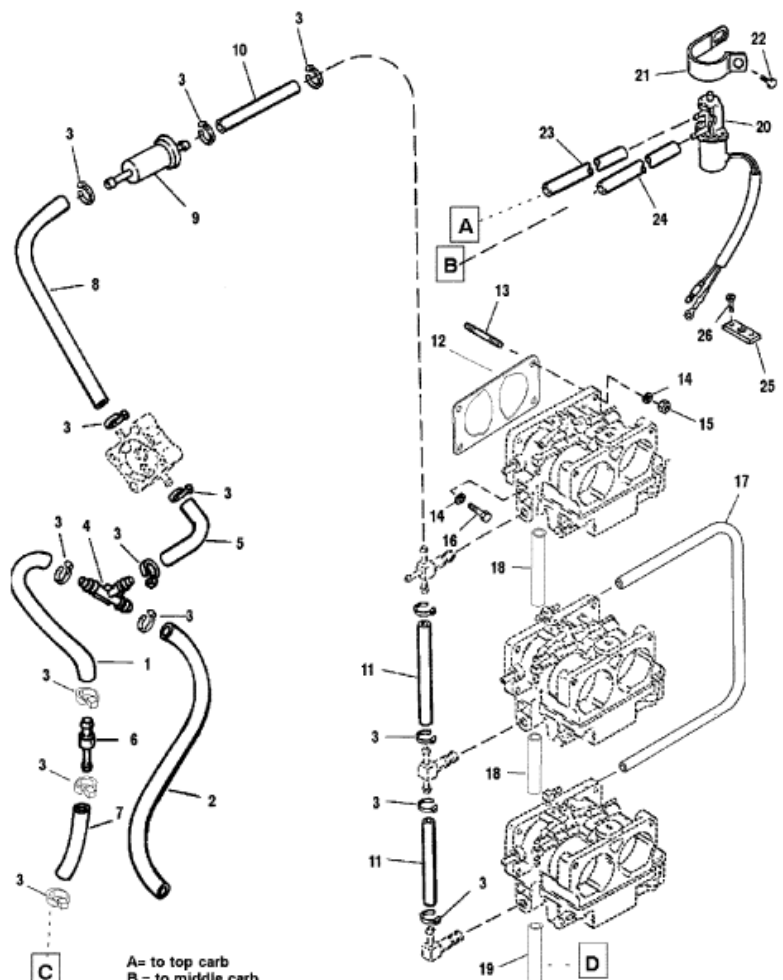


Parts List					
Ref	Class	Part	Description	Qty	Footnote
1	32	823813 29	TUBING, (12.00 Inches Bulk) (Cut to	1	5
2	32	99128 78	HOSE, (26.00 Inches Bulk)	1	
3	54	816311	CABLE TIE, (8.00 Inches)	15	
4	22	818993	CONNECTOR, Tee	1	
5	32	830760	HOSE	1	
6	22	818994 1	CHECK VALVE	1	
7	32	830757 80	HOSE, (28.00 Inches Bulk) (Cut to :	1	
8	32	830762	HOSE	1	
9	35	816296 1	FILTER, Fuel	1	
10	32	830756109	HOSE, (57.00 Inches Bulk) (Cut to :	1	
11	32	830756109	HOSE, (57.00 Inches Bulk) (Cut to :	2	
12	27	828292	GASKET	3	4
13	16	27037	STUD, (.250-28 x 1.125)	6	
14	13	26992	LOCKWASHER, (.250)	6	
15	11	20361	NUT, (.250-28)	6	
16	10	55715	SCREW, (.250-20 x .880)	6	
17	32	99130122	TUBING, (20.00 Feet Bulk) (Cut to :	1	
18	32	99128 78	HOSE, (26.00 Inches Bulk) (Cut to :	2	
19	32	99128 78	HOSE, (26.00 Inches Bulk)	1	
20		42859A 2	ENRICHNER VALVE	1	
21	54	63300 1	CLAMP	1	(No Stamping)
21	54	63300 3	J CLIP	1	(Stamped '3')
22	10	73286	SCREW, (.250-20 x .500)	1	
23	32	99126 88	TUBING, (36.00 Inches Bulk) (Cut t	1	
24	32	99126 88	TUBING, (36.00 Inches Bulk) (Cut t	1	
25		45915	TERMINAL BLOCK	1	
26	10	812832 1	SCREW, (#10-16 x .600)	1	
25	10	817626	SCREW, (#10-16 x .380)	1	
-	27	815791A92	ENGINE GASKET SET	1	



A= to top carb
 B= to middle carb
 C= to oil pump
 D= to Cyl. Head